

PINNACLE STRATEGIC EQUITY FUND (PINNSEF)



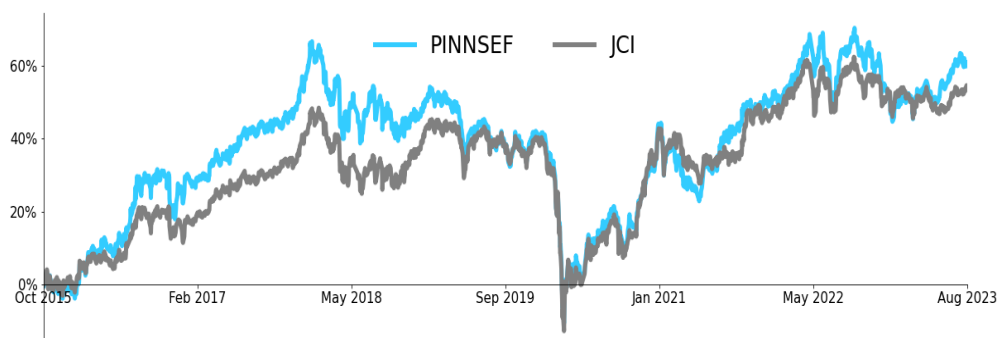
ABOUT PINNACLE

Pinnacle Investment (PT Pinnacle Persada Investama) is a stand alone quantitative-based investment management firm based in Indonesia. As the first technology driven investment firm in Indonesia, we bring different perspectives and approaches in investing where we value innovation, collaborative thinking, and passions for performance with a commitment to put our client's interests and needs first. Pinnacle Investment was established in 2014, is registered and supervised by The Financial Services Authority (OJK) based on permission letter No. KEP-37/D.04/2015 dated 04 June 2015.

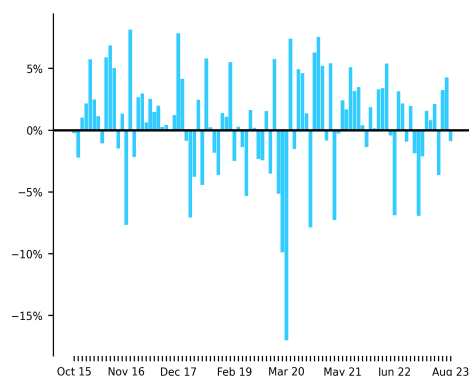
INVESTMENT OBJECTIVE

The fund aims to achieve an superior medium to long term capital gains in a low volatility environment through an actively managed portfolio of predominantly large cap, liquid Indonesian stocks. The Fund has a flexible asset allocation strategy and invests between 80% to 100% of its assets in equity securities and between 0% to 20% of its assets in money market instruments and/or debt securities.

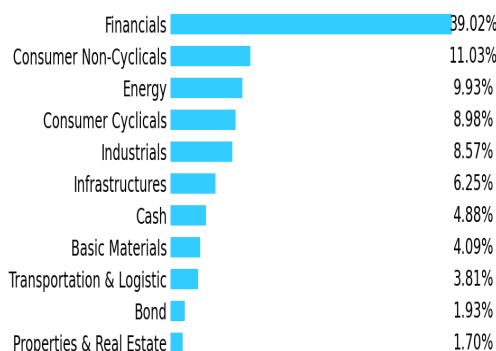
FUND PERFORMANCE (%)



MONTHLY RETURN



SECTOR ALLOCATION



| Performance | 1 Month | 3 Months | 6 Months | YTD | 1 Year | 3 Years | 5 Years | Since Inception |
|---------------|---------|----------|----------|---------------|--------|---------|---------|-----------------|
| PINNSEF | -0.88% | 6.71% | 5.87% | 5.26% | -2.87% | 35.24% | 6.22% | 60.00% |
| JCI | 0.32% | 4.82% | 1.61% | 1.50% | -3.14% | 32.73% | 15.53% | 54.27% |
| Highest Month | | | | December 2016 | | 8.15% | | |
| Lowest Month | | | | March 2020 | | -17.01% | | |

CUSTODIAN BANK

PT Bank Central Asia Tbk, obtained approval as a custodian bank on November 13, 1991 based on the Decree of The Chairman of BAPEPAM No. KEP-148/PM/1991. Since then, the BCA Custodian has provided a variety of services to depositors, both locally and overseas. Assets deposited in the form of shares, bonds, warrant, pre-emptive rights, Bank Indonesia Certificates, Government Securities, Bilyet Deposits, Debt Recognition Letters and Land Letters.

Based on the prevailing OJK regulation, subscription, switching, and redemption confirmation letters are valid proof of mutual fund units ownership, which are issued and delivered by the custodian bank. In the event that there has been a reference of securities ownership facility (Acuan Kepemilikan Sekuritas - AKSES) of the participation, unit holder can see the ownership of mutual fund through the <https://akses.ksei.co.id/>.

Prospectus and further information can be accessed on <https://www.pinnacleinvestment.co.id/>

DISCLAIMER

Investment Through Mutual Funds Contains Risk, Prior To Deciding To Invest, Prospective Investors Must Read And Understand The Prospectus, Past Performance Does Not Guarantee / Reflect Indication Of Future Performance. Financial Services Authority ("OJK") Does Not Give Any Statement Of Approving Or Disapproving These Effects, Nor Stating The Truth Or The Adequacy Of The Contents Of This Mutual Fund Prospectus. Every Statement Contradicting These Stipulations Is A Breach Of Law.

Mutual funds are Capital Market products and not products issued by Selling Agent / the Bank. The Mutual Fund Selling Agent is not responsible for the lawsuit and risks of managing the mutual fund portfolio being carried out by the Investment Manager. This product information summary does not replace the Mutual Fund Prospectus and was prepared by PT Pinnacle Persada Investama (Pinnacle Investment) only for information needs and does not constitute an offer to buy or sell. All information contained in this document is presented correctly. If necessary, investors are advised to seek professional opinion before making an investment decision. Past performance is not necessarily a clue to future performance, nor is it an estimate made to give an indication of future performance or trends

FUND INFORMATION

| | |
|-----------------------|------------------------|
| NAV Unit Price | IDR 1,599.96 |
| Fund Size | IDR 26.61 B |
| Effective Date | 9 September 2015 |
| Effective Letter No. | S-395/D.04/2015 |
| Inception Date | 15 October 2015 |
| Type of Fund | Equity |
| Custodian Bank | BCA |
| Fund Currency | IDR Rupiah |
| Pricing Period | Daily |
| ISIN Code | IDN000215100 |
| Bloomberg Ticker | PINNSEF IJ |
| Total Units Offered | Max. 1 billion units |
| Min. Initial Subs. | IDR 100,000,00 |
| Min. Subsequent Subs. | IDR 100,000,00 |
| Subscription Fee | Max. 2.00%/transaction |
| Redemption Fee | Max. 3.00%/transaction |
| Switching Fee | Max. 1.00%/transaction |
| Management Fee | Max. 3.50% p.a |
| Custodian Fee | Max. 0.25% p.a |

PORTFOLIO COMPOSITION (%)

| | |
|-------------------|--------|
| Equity | 93.20% |
| Cash&Money Market | 4.88% |
| Fixed Income | 1.92% |

PORTFOLIO POLICY (%)

| | |
|-------------------|----------|
| Equity | 80%-100% |
| Fixed Income | 0%-20% |
| Cash&Money Market | 0%-20% |

RISK CLASSIFICATION



MAIN RISKS

Risk of deteriorating economic and political condition
Risk of Liquidity
Risk of reduction in NAV of each participation unit
Risk of dissolution and liquidation

TOP HOLDINGS (in Alphabetical Order)

| | |
|-------------------------------------|-------|
| Bank Central Asia Tbk | 8.4% |
| Bank Mandiri (persero) Tbk | 10.1% |
| Bank Rakyat Indonesia (persero) Tbk | 9.9% |
| Bfi Finance Indonesia Tbk | 4.7% |
| Indah Kiat Pulp & Paper Tbk | 4.1% |
| Indofood Sukses Makmur Tbk | 5.9% |
| Samudera Indonesia Tbk | 3.8% |
| TD Bank Syariah Bukopin | 4.9% |
| Telkom Indonesia (persero) Tbk | 5.8% |
| United Tractors Tbk | 6.3% |

Mutual Fund Account

PT Bank Central Asia, Cabang Thamrin (KCU)

Account Name :
Reksa Dana Pinnacle Strategic Equity Fund
A/C 206 335 1113

Investment Manager :

PINNACLE INVESTMENT
Capital Place, 41st floor
Jl. Jendral Gatot Subroto Kav. 18
Jakarta 12710, Indonesia
Phone : +62 21 5790 7500
Fax : +62 21 5790 4227
Email : inquiry@pinnacleinvestment.co.id
Instagram : @pinnacleinvestment
Web : www.pinnacleinvestment.co.id
Blog : blog.pinnacleinvestment.co.id