

PINNACLE ENHANCED LIQUID ETF (XPLQ)



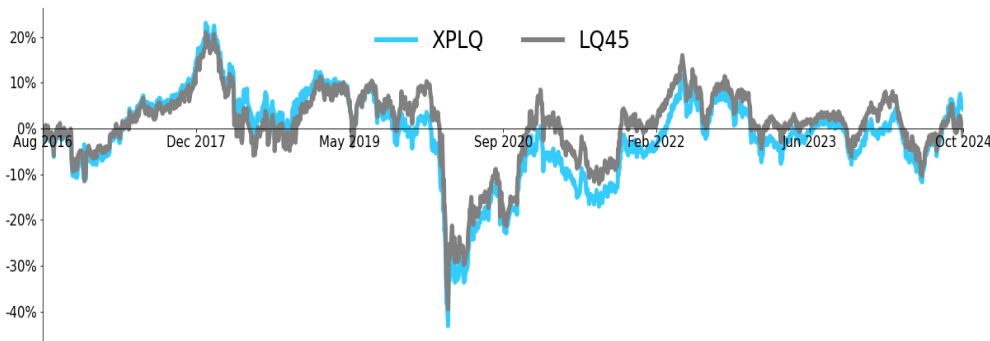
ABOUT PINNACLE

Pinnacle Investment (PT Pinnacle Persada Investama) is a stand alone quantitative-based investment management firm based in Indonesia. As the first technology driven investment firm in Indonesia, we bring different perspectives and approaches in investing where we value innovation, collaborative thinking, and passions for performance with a commitment to put our client's interests and needs first. Pinnacle Investment was established in 2014, is registered and supervised by The Financial Services Authority (OJK) based on permission letter No. KEP-37/D.04/2015 dated 4 June 2015.

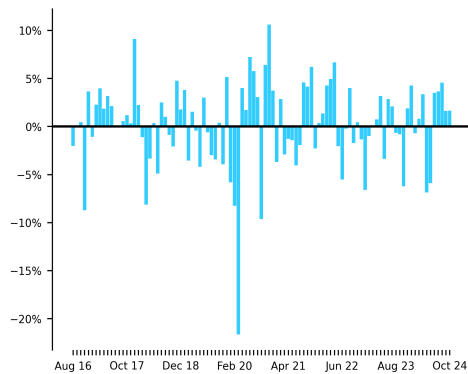
INVESTMENT OBJECTIVE

The fund aims to achieve superior mid-to long-term capital gains through actively managed portfolio of large-cap stocks that have favorable exposure to target style factors subject to constraints. The fund invests 80-100% in equity securities and 0-20% in money market instruments and/or debt securities.

FUND PERFORMANCE (%)



MONTHLY RETURN



SECTOR ALLOCATION

| | |
|--------------------------|--------|
| Financials | 42.84% |
| Energy | 14.56% |
| Infrastructures | 10.39% |
| Basic Materials | 6.82% |
| Properties & Real Estate | 6.73% |
| Cash | 6.36% |
| Industrials | 6.13% |
| Consumer Non-Cyclicals | 3.10% |
| Consumer Cyclicals | 2.77% |
| Healthcare | 0.31% |

FUND INFORMATION

| | |
|----------------------|----------------------|
| NAV Unit Price | IDR 524.92 |
| Fund Size | IDR 24.82 B |
| Effective Date | 4 August 2016 |
| Effective Letter No. | S-396/D.04/2016 |
| Inception Date | 15 August 2016 |
| Type of Fund | ETF |
| Exchange Code | XPLQ |
| Trade Exchange | IDX |
| Custodian Bank | BCA |
| Fund Currency | IDR Rupiah |
| Pricing Period | Daily |
| ISIN Code | IDN000249109 |
| Bloomberg Ticker | XPLQ IJ |
| Total Units Offered | Max. 4 billion units |
| Subscription Fee | Broker Fee |
| Redemption Fee | Broker Fee |
| Management Fee | Max. 3.50% p.a |
| Custodian Fee | Max. 0.25% p.a |

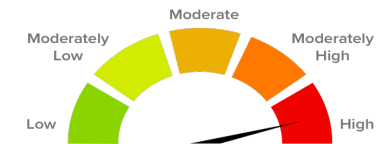
PORTFOLIO COMPOSITION (%)

| | |
|---------------------|--------|
| Equity | 93.64% |
| Cash & Money Market | 6.36% |

PORTFOLIO POLICY (%)

| | |
|---------------------|----------|
| Equity | 80%-100% |
| Cash & Money Market | 0%-20% |

RISK CLASSIFICATION



MAIN RISKS

- Risk of deteriorating economic and political condition
- Risk of Liquidity
- Risk of reduction in NAV of each participation unit
- Risk of dissolution and liquidation

MUTUAL FUND BENEFITS

- Traded on the Indonesian Stock Exchange
- Investment Diversification
- Investment Value Growth Potential
- Information Transparency
- Lower Costs

| Performance | 1 Month | 3 Months | 6 Months | YTD | 1 Year | 3 Years | 5 Years | Since Inception |
|---------------|---------|----------|----------|--------|---------------|---------|---------|-----------------|
| XPLQ | 1.67% | 8.07% | 9.12% | 5.19% | 11.74% | 9.35% | 4.20% | 8.05% |
| LQ45 | -1.86% | 0.84% | -0.57% | -5.06% | 3.26% | -3.27% | -6.44% | 1.03% |
| Highest Month | | | | | November 2020 | | | 10.62% |
| Lowest Month | | | | | March 2020 | | | -21.65% |

CUSTODIAN BANK

PT Bank Central Asia Tbk, obtained approval as a custodian bank on 13 November 1991 based on the Decree of The Chairman of BAPEPAM No. KEP-148/PM/1991. Since then, the BCA Custodian has provided a variety of services to depositors, both locally and overseas. Assets deposited in the form of shares, bonds, warrant, pre-emptive rights, Bank Indonesia Certificates, Government Securities, Bilyet Deposits, Debt Recognition Letters and Land Letters.

Based on the prevailing OJK regulation, subscription, switching, and redemption confirmation letters are valid proof of mutual fund units ownership, which are issued and delivered by the custodian bank. In the event that there has been a reference of securities ownership facility (Acuan Kepemilikan Sekuritas - AKSES) of the participation, unit holder can see the ownership of mutual fund through the <https://akses.ksei.co.id>.

Prospectus and further information can be accessed on <https://www.pinnacleinvestment.co.id>.

DISCLAIMER

Investment Through Mutual Funds Contains Risk, Prior To Deciding To Invest, Prospective Investors Must Read And Understand The Prospectus, Past Performance Does Not Guarantee / Reflect Indication Of Future Performance. Financial Services Authority ("Ojk") Does Not Give Any Statement Of Approving Or Disapproving These Effects, Nor Stating The Truth Or The Adequacy Of The Contents Of This Mutual Fund Prospectus. Every Statement Contradicting These Stipulations Is A Breach Of Law.

Mutual funds are Capital Market products and not products issued by Selling Agent / the Bank. The Mutual Fund Selling Agent is not responsible for the lawsuit and risks of managing the mutual fund portfolio being carried out by the Investment Manager. This product information summary does not replace the Mutual Fund Prospectus and was prepared by PT Pinnacle Persada Investama (Pinnacle Investment) only for information needs and does not constitute an offer to buy or sell. All information contained in this document is presented correctly. If necessary, investors are advised to seek professional opinion before making an investment decision. Past performance is not necessarily a clue to future performance, nor is it an estimate made to give an indication of future performance or trends.

TOP HOLDINGS (in Alphabetical Order)

| | |
|--|------|
| Adaro Energy Tbk (ADRO) | 5.3% |
| Amman Mineral Internasional Tbk (AMMN) | 6.8% |
| Bank Central Asia Tbk (BBCA) | 6.9% |
| Bank Mandiri (Persero) Tbk (BMRI) | 7.7% |
| Bank Negara Indonesia Tbk (BBNI) | 6.6% |
| Bank Rakyat Indonesia (Persero) Tbk (BBRI) | 7.1% |
| Bank Syariah Indonesia Tbk (BRIS) | 3.9% |
| Panin Financial Tbk (PNLF) | 4.0% |
| Pantai Indah Kapuk Dua Tbk (PANI) | 4.8% |
| United Tractors Tbk (UNTR) | 4.8% |

Dealer Participant

Indo Premier Securities
 Pacific Century Place 16/F/SCBD Lot 10
 Jl. Jendral Sudirman Kav. 52-53
 Jakarta 12190, Indonesia
 Phone : +62 21 5088 7200

Investment Manager :

PINNACLE INVESTMENT
 Capital Place, 41st Floor
 Jl. Jendral Gatot Subroto Kav. 18
 Jakarta 12710, Indonesia

Phone : +62 21 5790 7500
 Fax : +62 21 5790 4227
 Email : inquiry@pinnacleinvestment.co.id
 Instagram : [@pinnacleinvestment](https://www.instagram.com/pinnacleinvestment)
 Web : www.pinnacleinvestment.co.id
 Blog : blog.pinnacleinvestment.co.id